

## Bitzer Bitz

### Specifications

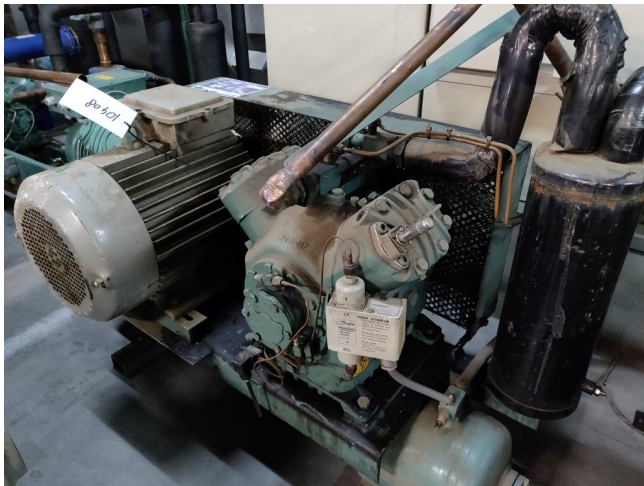
Brand	Bitzer
Type	Bitz
Refrigerant	Freon
Refrigerant type	R 404 A or other types
kW at +10°C/+40°C	42.4
kW at 0°C/+40°C	35.1
kW at -5°C/+40°C	23.3
kW at -10°C/+40°C	18.6
kW at -20°C/+40°C	11.3
kW at -30°C/+40°C	8.4
Electromotor Specs	4
On steel base frame	✓
Liquid receiver	✓
Oil separator	✓
Remarks	Our capacity table is based on Manufacturer spec. We would like to know which refrigerant is in your system
Stock	1



### Description

#### Used Bitzer Bitz

Used Bitzer 4N-2Y open-type Reciprocating Compressor with a 4kW E-motor. For all the other specs (if available), see the picture of the manufacturer model plate or the attached pdf file. \*Why choose for HOSBV? Were not only the largest used refrigeration specialist in Europe, but also, we deliver all equipment including an extensive test, warranty and industrial cleaning.



result

Q [W] Q* [W] P [kW] Qc [W]	Cooling capacity Cooling capacity * Power input Condenser Capacity (w. HX)	COP [-] COP* [-] m [kg/h] n [1/min]	COPIER COPIER* Mass flow Compr. speed							
te	ts	16°C	8°C	0°C	-2°C	-10°C	-18°C	-26°C	-32°C	
30°C	Q [W]	47905	39680	32606	26536	21347	16928	13186	10035	
	Q* [W]	47905	39680	32606	26536	21347	16928	13186	10035	
	P [kW]	7.53	7.28	6.95	6.56	6.13	5.65	5.16	4.65	
	Qc [W]	55060	46594	39209	32770	27168	22299	18086	14455	
	COP [-]	6.36	5.45	4.69	4.04	3.48	2.99	2.56	2.16	
	COP* [-]	6.36	5.45	4.69	4.04	3.48	2.99	2.56	2.16	
	m [kg/h]	1005	826	673	545	436	344	267	203	
	n [1/min]	1450	1450	1450	1450	1450	1450	1450	1450	
	40°C	Q [W]	42471	35107	28764	23316	18654	14684	11322	8482
		Q* [W]	42471	35107	28764	23316	18654	14684	11322	8482
P [kW]		8.68	8.23	7.74	7.21	6.64	6.05	5.43	4.80	
Qc [W]		50715	42928	36118	30164	24964	20428	16479	13047	
COP [-]		4.89	4.26	3.72	3.23	2.81	2.43	2.09	1.77	
COP* [-]		4.89	4.26	3.72	3.23	2.81	2.43	2.09	1.77	
m [kg/h]		976	799	649	523	416	326	250	187.2	
n [1/min]		1450	1450	1450	1450	1450	1450	1450	1450	
50°C		Q [W]	37086	30586	24978	20155	16025	12508	9529	7023
		Q* [W]	37086	30586	24978	20155	16025	12508	9529	7023
	P [kW]	9.73	9.15	8.51	7.85	7.14	6.40	5.64	4.84	
	Qc [W]	46334	39274	33067	27609	22810	18592	14884	11623	
	COP [-]	3.81	3.34	2.93	2.57	2.24	1.95	1.69	1.45	
	COP* [-]	3.81	3.34	2.93	2.57	2.24	1.95	1.69	1.45	
	m [kg/h]	944	771	624	500	395	307	233	170.9	
	n [1/min]	1450	1450	1450	1450	1450	1450	1450	1450	

No calculation possible (see message in single point selection)  
\*According to EN12900 (20°C suction gas temp., 0K liquid subcooling)